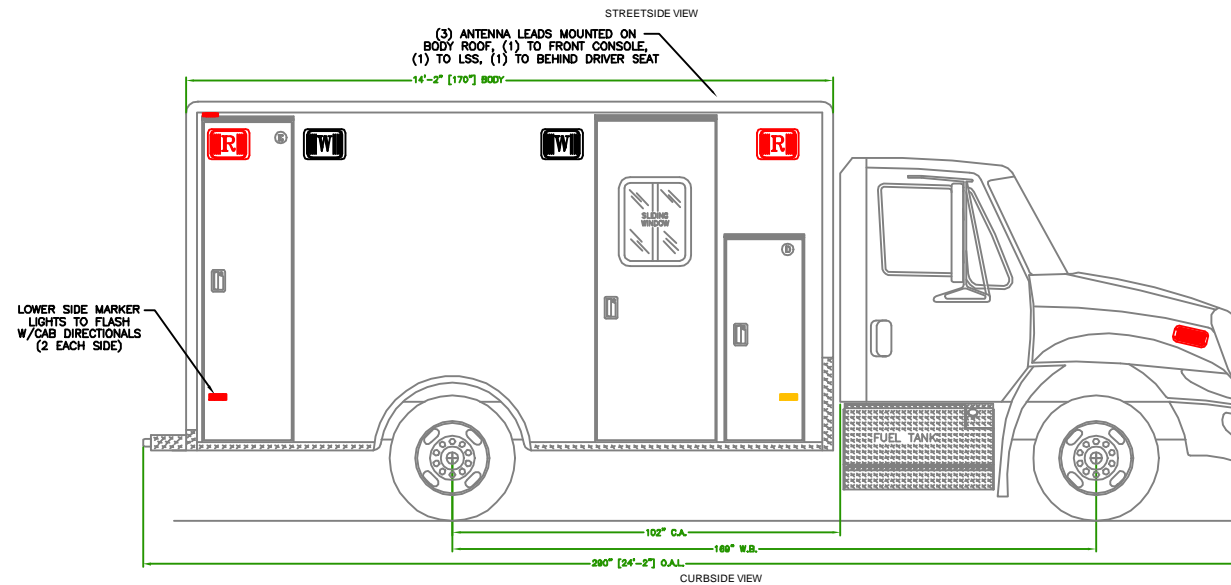
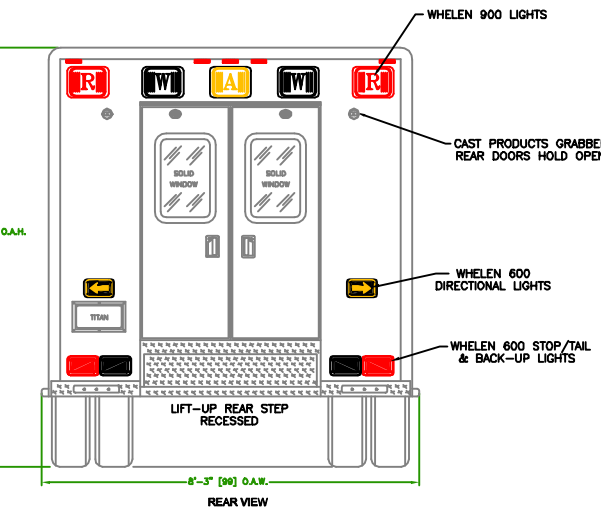
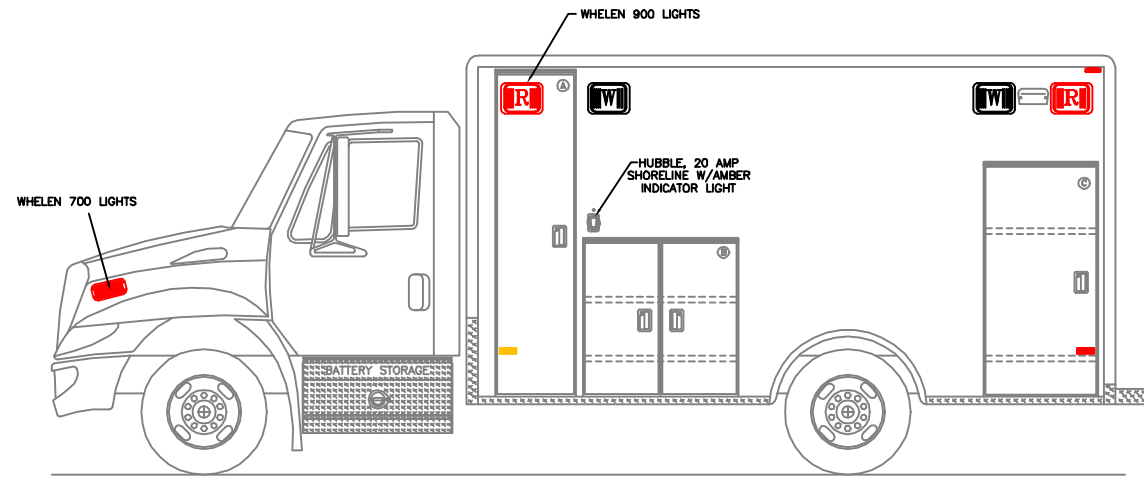
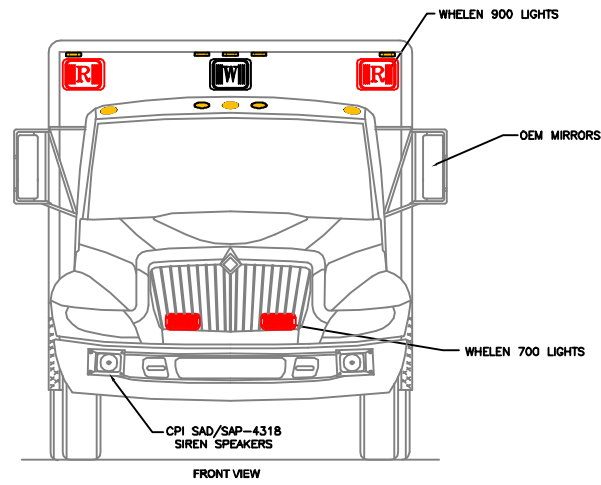
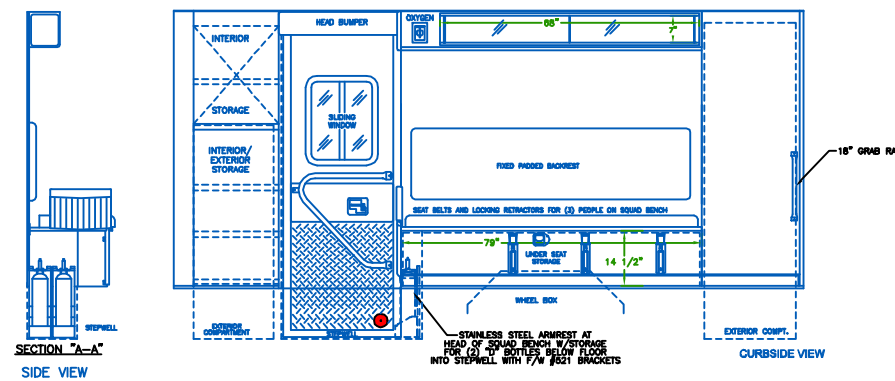
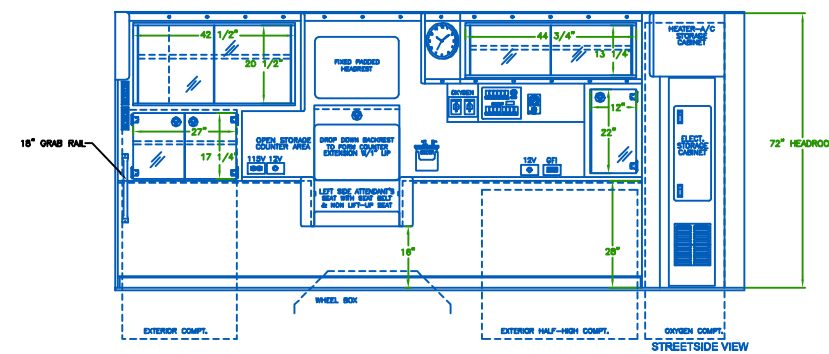
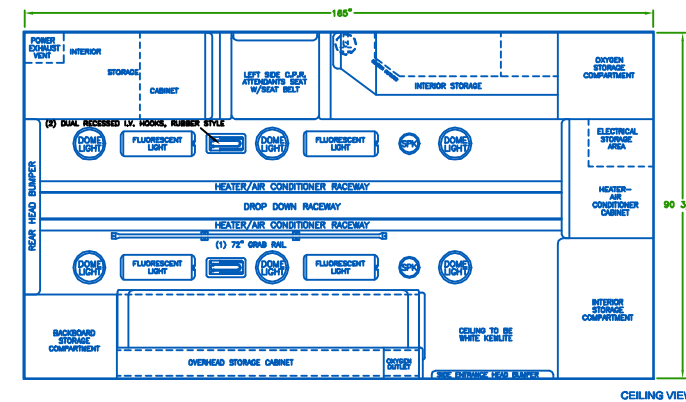
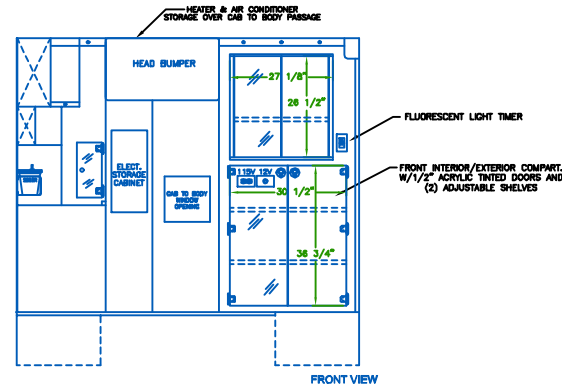
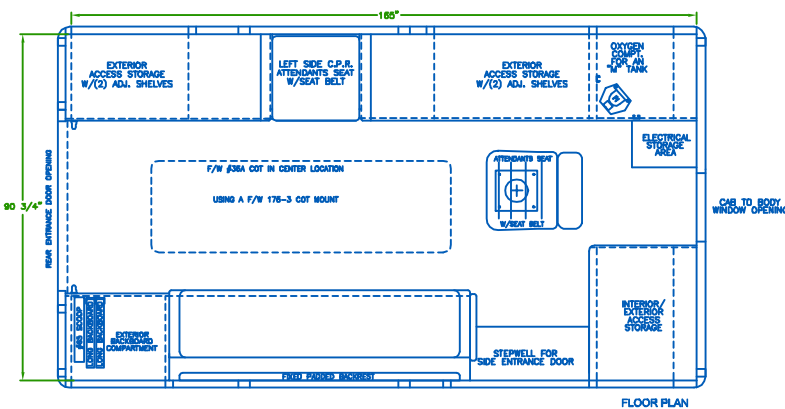


CUSTOM DESIGNED FOR  
**TITAN INTERNATIONAL 72" HR**  
 BY  
**P.L. CUSTOM  
 EMERGENCY VEHICLES**



COMPARTMENT DESCRIPTIONS				
	WIDTH	HEIGHT	DEPTH	PURPOSE
(A)	20	83	21 3/4	OXYGEN STORAGE
(B)	40 3/8	39	21 3/4	EXTERIOR STORAGE
(C)	30 1/2	59	21 3/4	INTERIOR/EXTERIOR ACCESS STORAGE
(D)	20	52	21 3/4	INTERIOR/EXTERIOR ACCESS STORAGE
(E)	24 1/2	83	21 3/4	BACKBOARD STORAGE
	29	80		SIDE ENTRANCE DOOR
	44 1/4	58		REAR ENTRANCE DOORS
DIMENSIONS APPROXIMATE				

**INTERIOR  
 DIMENSIONS**  
 HEIGHT 72"  
 LENGTH 165"  
 WIDTH 90"



- NOTES:**
- 1.) DRAWINGS ARE FOR REPRESENTATIONAL PURPOSES ONLY.
  - 2.) ALL DIMENSIONS SHOWN ARE APPROXIMATE.
  - 3.) EXTERIOR COMPARTMENT DIMENSIONS REFLECT WALL TO WALL MEASUREMENTS. PASS THROUGH OPENINGS WILL BE SMALLER.
  - 4.) INTERIOR CABINET DIMENSIONS REFLECT THE CABINET OPENING. PASS THROUGH OPENINGS WILL BE SMALLER.
  - 5.) DIMENSIONS FOR OVERALL HEIGHT AND OVERALL LENGTH ARE APPROXIMATE UNTIL THE CHASSIS IS BUILT AND RECEIVED AT OUR FACTORY.



**"NOTICE"**  
 The drawing and data thereon shall not be duplicated, used or disclosed to others for procurement or manufacturing purposes, except as otherwise authorized by contract, without written permission of P.L. CUSTOM BODY & EQUIPMENT CO., INC. We reserve the right to make changes at any time, without notice, in materials, equipment & specifications. Written specifications take precedence over drawings which are for clarity only. All reproductions shall bear this notice.

DWG. REV.	CH. REV.	DATE	APP.
TITAN SERIES			
INTERNATIONAL			
DO NOT SCALE DRAWING			
DATE	BY	REV.	APP.
3/2010	DIANA RITTER	1	
SCALE			
3/4" = 1'-0"			
DWG. NO.	0001	REV.	A0000